

DartmoorARTS

Arts news and reviews from around the moor – *compiled by Susanne Haines*

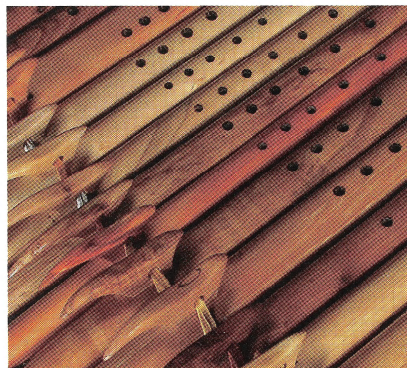
ART, ECOLOGY AND ECONOMY

Chris Lewis reports on CCANW's latest exhibition which looks at how local artists are responding to environmental and economic challenges

CCANW's 'Art, Ecology and the Economy' exhibition and accompanying forums are aimed at addressing the pressing issues of the current economic crisis and climate change, particularly in the way that they affect our local communities, creative businesses and tourist industry.

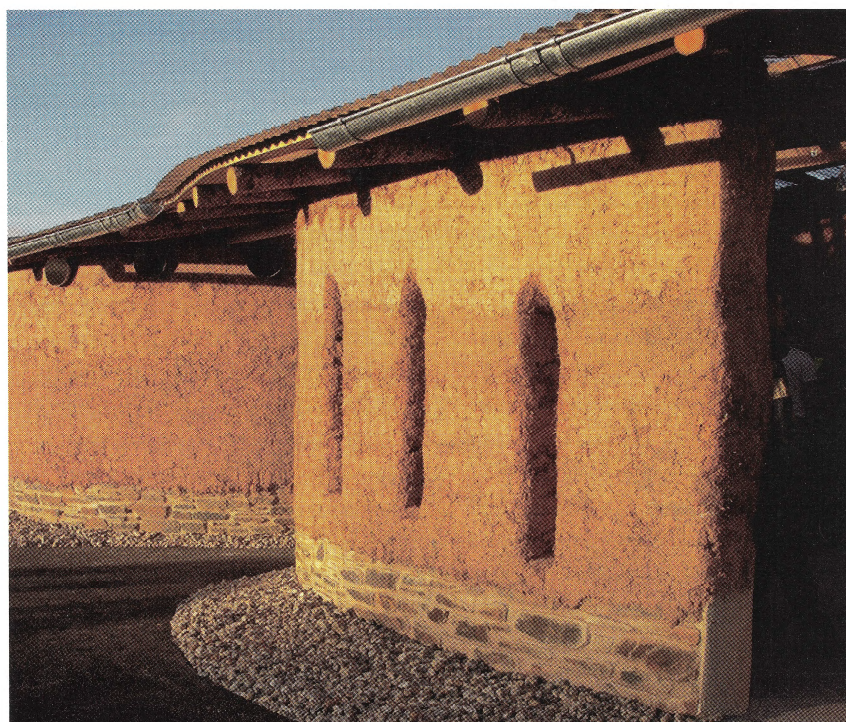
The exhibition itself will showcase the work of artists from the Greater Dartmoor area and beyond who are building successful businesses that are conscious of minimising their environmental impact by, for instance, using natural resources, including wool for felt-making and wood sourced from local forests. Some artists (including designers and makers of all kinds), were invited to exhibit, while others were chosen from an 'open submission' process.

CCANW (Centre for Contemporary Art and the Natural World) opened a Project Space in 2006 in Haldon Forest Park near Exeter, as a first phase of an exciting, long-term partnership with the Forestry Commission. The Project Space is the base for an integrated artistic and educational programme which covers all art forms and takes place



ABOVE Flutes made by Nigel Shaw
www.seventhwavemusic.co.uk

PHOTOGRAPH © WWW.CHRISCHAPMANPHOTOGRAPHY.COM

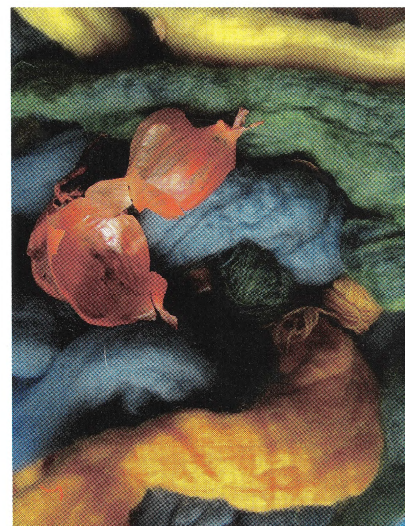


ABOVE Jackie Abey and Jill Smallcombe, Cob Visitor Facility, The Eden Project, 2002

PHOTOGRAPH ABEY SMALLCOMBE

there, in the forest and other locations and includes exhibitions, residencies, projects, workshops, live events and talks. CCANW welcomes around 40,000 visitors to its Project Space annually, with many others engaging with other events in the forest.

For its 'Art, Ecology and the Economy' exhibition, CCANW has worked with the Princetown-based Duchy Square Centre for Creativity and its operator, Integria, who specialise in supporting Creative, Cultural and Social Enterprises UK-wide and also deliver the Business Link start-up workshop programme in Somerset and Devon. Duchy Square offers incubation, advice and support for new creative businesses



ABOVE Onion skins and dyed wool. Yuli Somme and Anne Belgrave – Bellacouche

PHOTOGRAPH BELLACOUCHE



PHOTOGRAPH CHRIS LEWIS

ABOVE Centre for Contemporary Arts and the Natural World, Haldon Forest Park

and promotes work from emerging local craft makers and artists. The building, opened in March 2009, houses 17 small workshops and offices, a gallery for arts and crafts and a teaching studio in the heart of Princetown.

Together, CCANW and Duchy Square hope to encourage innovative solutions to environmental and economic challenges. The exhibition, which runs from 16 January–28 March, will be displayed simultaneously in two parts at

the two venues. Four day-long forums will bring together artists and designers, environmentalists and those from the wider business community, including retailers, advisors and planners.

Both centres will be holding launch events, with refreshments, to which all are welcome. At the Duchy Square Centre for Creativity this will be on Saturday 16 January from 2–4pm; at CCANW it is on Sunday 17 January from 2–4pm.



PHOTOGRAPH PHILLIPA SMITH

LEFT Duchy Square Centre for Creativity, Princetown

CCANW is open from 10am–4pm (until 14 February), 10am–5pm (from 16 February), closed on Mondays. Haldon Forest Park, Exeter EX6 7XR. For information email: info@ccanw.co.uk or tel: (01392) 832277.

Duchy Square is open Tuesday to Sunday from 10am–5pm. Princetown PL20 6QF. For information tel: (01822) 890828.

Visit www.ccanw.co.uk for further information, including a list of speakers at the forums. Admission to exhibitions is free at both venues.

'Art, Ecology and the Economy' is funded by Arts Council England, Devon County Council and Greater Dartmoor LEAF, incorporating funding from the EU, Defra, SWRDA and LEADER.

FORUMS

Booking is essential, through CCANW. Places are limited. There is an admission charge of £10 (£8 concessions) for each forum.

Forum: Wood Culture (CCANW)
Thursday 28 January, 10am–4pm

Aimed at promoting the environmental benefits of using local, sustainably grown woods, using new technologies and traditional skills in the production of buildings, furniture and utility objects.

Forum: Wool Culture (Duchy Square Centre)
Thursday 11 February, 10am–4pm

Exploring ways in which we can utilise and add value to the natural products of local agriculture, with a focus on wool and bringing together producers and users of wool from the Greater Dartmoor area and other wool-producing areas.

Forum: Water Culture (CCANW)
Thursday 25 February, 10am–4pm

Exploring ways in which the arts can encourage new visitors to the countryside and enhance the quality of that experience, with a focus on cultural activity associated with the rivers, lakes, and reservoirs of Greater Dartmoor and other parts of the UK.

Forum: Establishing Cultures (Duchy Square Centre)
Thursday 18 March, 10am–4pm

The concluding forum will draw together ideas that have emerged from the exhibition and previous forums and focus on building new partnerships between the creative industries, environmentalists, and those from the tourism and business communities.