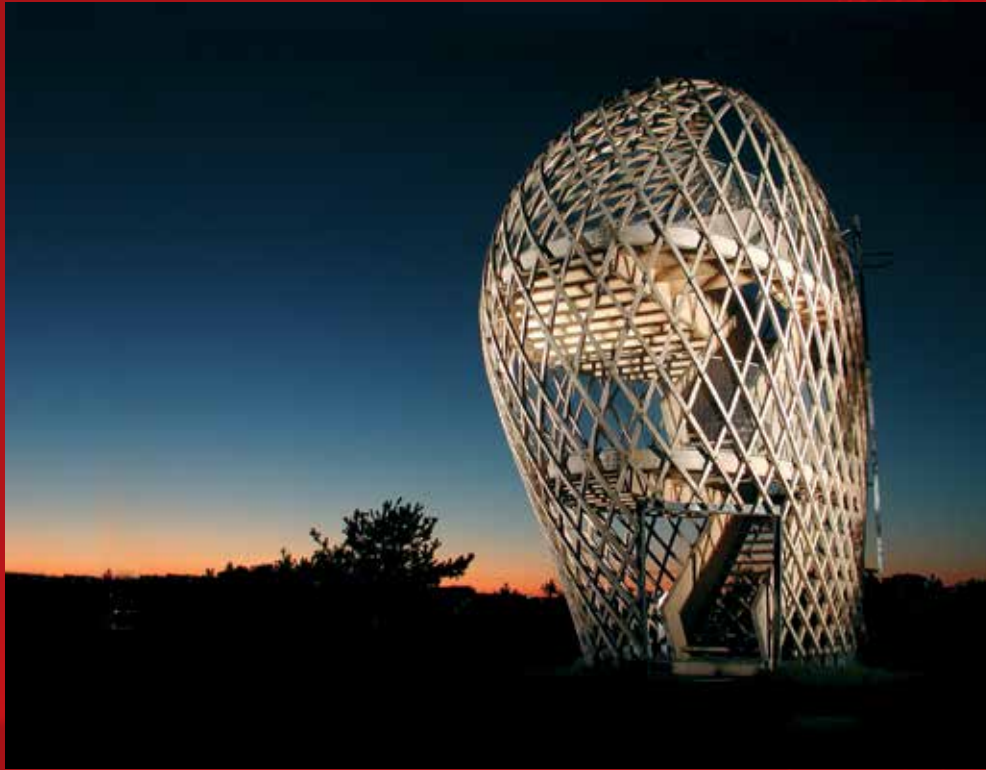


Centre for Contemporary Art and the Natural World

www.ccanw.co.uk

SUMMER PROGRAMME
JULY-SEPTEMBER 2007

PROJECT SPACE
HALDON FOREST PARK
EXETER



CCANW

Exhibition: *Inspiring Futures: European Timber Architecture for the 21st Century*
Saturday 7 July-Sunday 16 Sept
Admission free

In May, CCANW launched *Wood Culture* – an ambitious year-long festival celebrating wood and exploring its many uses in contemporary architecture and design.

Our summer exhibition is CCANW's selection of the most inspiring examples of contemporary European timber architecture. Twelve projects have been selected by a panel of architecture, engineering and forestry experts.

Projects were chosen that make enlightening and inspiring uses of timber and demonstrate the beauty and usefulness of this material. These projects show how the challenge of building sustainably is being met across Europe.

The twelve projects selected include work from Austria, Germany, Switzerland, Norway, Finland, the UK and Russia.

The selection is intentionally diverse and includes buildings of different scales and with very different uses. Our aim in assembling these examples is to demonstrate the creative range of designers working in Europe today and show how they sustain innovative practice.



01
Maggie's Centre, Dundee, Scotland
2003. Architect: Frank Gehry



02
Wooden Church of Käräsämäki,
Finland 2004. Architects: Lassila
Hirvilämmi

The programme has been researched by NEAT, Oliver Lowenstein of Fourth Door Research and White Design Associates



03
The Bridge at Kjearra,
Lardal, Norway 2001.
Architect: Arne Eggen

04
North Rhine Westphalia
Representatives Hall,
Berlin, Germany 2002.
Architect: Petzinka Pink



By exposing how creative, intellectual, political and regional communities shift expectations and develop new ideas and techniques we hope to inspire others to take up the challenge of working with this most ancient and modern material.

The exhibition will also be shown at the Architecture Centre, Bristol 16 October-11 November and then tour.

Catalogue

A fully illustrated, 40 page catalogue of the *Inspiring Futures* exhibition has been produced, price £5. It includes an essay by Oliver Lowenstein who has written on contemporary timber architecture for many years and runs *Fourth Door Review* www.fourthdoor.co.uk



05
Tynder



06
Teignmouth Community Choir



07
Nigel Shaw's hand-made
wooden flutes

**Music: Haldon LogJam –
the free music festival**
Saturday 14 July, from 11am
Admission free

To celebrate CCANW's year-long *Wood Culture* festival and our recently opened exhibition *Inspiring Futures*, we are presenting a free, day-long music festival in and just outside of our Project Space.

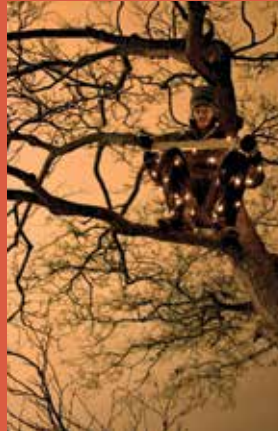
Experimental rock collective Tynder will ignite the Haldon Forest 11.30am-2pm with their cool grooves and kosmic sounds, incorporating drums and bass, trumpet and electronics, but also a turntable spinning 12" disks cut from timber and other, more exotic hand-made timber instruments.

From 2-3pm Teignmouth Community Choir and members of Kenton Primary School Choir will be performing a specially composed song *Timber* and pieces from the *Science Oratorio* by David Haines (as seen on www.youtube.com).

Dartmoor based artist, composer and musician Nigel Shaw of Seventh Wave Music will be playing and displaying a wide range of his beautiful hand-made wooden flutes from 3-4.30pm, and there will be an opportunity for the audience to try out these instruments.



08
iLog by the Owl Project



09
Peter J. Evans

Inside the Project Space, 11am-4.30pm, the Owl Project will be displaying their environmentally friendly take on the iPod, the iLog (the housing of which, as the name suggests, is made of timber) as well as their timber laptop, the Log1k and their sound lathe technology (see www.owlproject.com).

Performance: Peter J. Evans
Our understanding of things
Saturday 14 & Sunday 15 July,
from 11am-5pm each day
Admission free

In parallel with his exhibition *Feedbacker* at Spacex, Peter J. Evans will perform a new work *Our understanding of things* at Haldon.

A piece of timber, the size of the artist's body, will be planed down until nothing remains other than the shavings on the floor which will then be used to create heat to cook food, its vapours becoming lost in the air.

Peter J. Evans' exhibition at Spacex runs from 19 May-14 July 2007, see www.spacex.org.uk. For more information contact Spacex on 01392 431 786 or email mandy@spacex.org.uk

Talk/workshop: Alan Sonfist
Tuesday 17 July, 11am-1pm, 2-4pm

Admission £6 (£4.50 conc.)
Booking essential

Since his making of an urban forest in New York City in the 60s, pioneer American artist Alan Sonfist has created numerous landscape sculptures around the world, collaborating with each community to reintegrate aspects of an area's indigenous natural and cultural histories. Alan will tell of his ongoing career and lead a workshop in the forest.



10
Alan Sonfist, from
*Myself Becoming
One with the Tree*,
photographic
series 1969

Event: Summer Food and Drink Fair
Sunday 29 July, 11am -4pm
Admission free

Purchase the contents of your picnic from local quality food and drink producers. Organised by the South Devon and Dartmoor Food and Drink Group

Event: Sustainability Day
Friday 17 August, 9.30am -4.30pm
Admission £10. Booking essential

Half seminar and half social gathering, the event is for artists, workshop leaders and anyone else with an interest in building sustainability into participatory arts projects. Booking and details from South West Participatory Arts Network.
T: 01837 55924
E: info@swpan.co.uk



PHOTOGRAPH: CIVEADAMS



11
Geodesic dome workshop

PHOTOGRAPH: SUSANNE HAINES



12
Twig People by Susanne Haines

August Family WoodPlay workshops

Geodesic Dome Construction
Wednesday 1 and Friday 3 August, 1.30pm
Admission free. No booking required

Learn interesting facts about geodesic structures and have fun building one made entirely of wood.

Den-building intensive for families
Saturday 11 August
10.30am-12.30pm or 2-4pm
Admission £1.50 adult, 50p child
Booking essential

Explore different den-building techniques using materials from the forest.

Twig People
Tuesday 21 August
10.30am-12noon or 1.30-3pm
Admission £1.50 adult, 50p child
Booking essential

Have fun learning how to identify different types of trees grown in Haldon Forest while making action figures from twigs and pine cones.

Workshops can be booked at other times for family groups and holiday play schemes. Please contact us for further details.

For budding architects and builders there is a special construction play area with several unusual timber building sets and building shapes designed by Sean Hellman from various types of locally sourced wood.

**Workshop: 5 Ways to
Walk Towards Yourself**
Wednesday 22-Sunday 26 August
10am-4pm daily

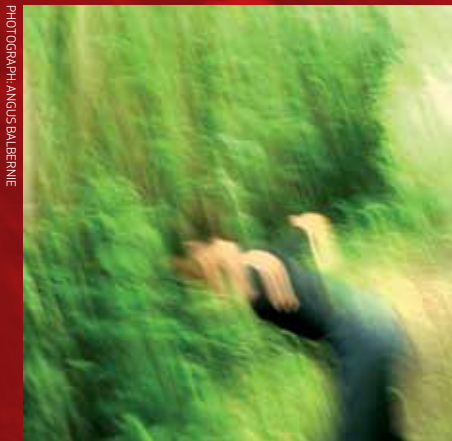
Fee £65 (£50 conc.). Booking essential,
numbers strictly limited

A unique and exciting movement-based
research project into landscape, body,
memory and autobiography for all
people working or interested in dance,
performance, music, visual, tactile, sonic
and related disciplines.

This pioneering project will be led by
choreographer Angus Balbernie, assisted
by Rosalyn Maynard and will culminate in
an informal performance and showing of
work developed during the workshop,
starting at the Project Space on
Saturday at 2pm and Sunday at 4pm.

Suitable for age 16+.
Bring packed lunches

13
Ros Maynard



PHOTOGRAPH: ANGUS BALBERNIE



14
Jane Boxall

*Her body sings with movement
and pure joy. She bowled us over
with her musicality.*
Illinois News Gazette

**Music and Dance: Ros Maynard,
Jane Boxall and Tynder**
Sunday 26 August, 4pm
Admission free

A ground-breaking collaboration between
the performers of the *5 Ways to Walk
Towards Yourself* workshop, marimba
player Jane Boxall – who will be performing
a solo concert on Monday – and members
of experimental rock collective Tynder.

Workshop: An introduction to the marimba
Bank Holiday Monday 27 August, 2-3pm
Admission £3 (£2 conc.). Booking essential,
limited numbers

A rare opportunity to try out a beautiful
and impressive 5 octave marimba and
learn about the instrument's history and
manufacture with USA-based musician
Jane Boxall.

**Music: A concert for solo marimba
with Jane Boxall**
Bank Holiday Monday 27 August, 7.30pm
Admission £8 (£6.50 conc.)
Booking essential

Catch marimba virtuoso Jane Boxall on
a rare UK date. In this solo concert Jane
will be performing pieces by international
composers including Akemi Naito, Beata
Moon and Eckhard Kopetzki. Jane is
currently studying for a percussion
doctorate at the University of Illinois
with renowned marimba soloist William
Moersch.

Suitable for age 15+.
Bring packed lunches



15
Trees
publ. Dorling Kindersley Ltd. 2005,
available from CCANW's bookshop

Workshop: *Know your trees*

Saturday 8 September, 10am-4pm

Admission £8,50 incl. tea/coffee

Booking essential (call 01392 834220)

Do you know your Hornbeam from Hawthorn, or how to tell two native oaks apart? This workshop, organised by the Forestry Commission, will show how to identify 25 of our most common trees.

Music: *Nimomashtic – Walk your talk*

Sunday 9 September, from 2.30pm

Admission free

As part of their second *Walk your talk* tour, Nimomashtic walk from gig to gig over a distance of 300 miles – planting apple trees and wildflowers along the trail in a bid to inspire others to think more carefully about the environment. Beginning in Brighton and finishing at the Eden project in Cornwall, the four piece band will be playing upbeat music that never fails to get audiences singing along. The band encourage people to walk with them, from village to village or gig to gig.



16
Nimomashtic

Conference: *Building with Wood, University of Exeter*

Tuesday 18 September, 10am-5pm

Admission £150 + VAT

Booking essential



17
Downland Gridshell,
Weald & Downland Museum,
Sussex 2002. Architects: Edward
Cullinan Architects

Woodfair South West and CCANW are together organising an ambitious one-day event on the use of timber in sustainable construction, to be held at the Peter Chalk Centre, University of Exeter. This will combine a series of seminars and displays covering a wide range of topics and issues including engineered timber products, planning and climate change, life cycle assessments, self-building, affordable housing and the woodfuel strategy and timber resources in the South West. There will also be a showing of our summer exhibition *Inspiring Futures*.

PHOTOGRAPH: BEAT MATHYS



18
Wave for Berne, Westgate Main
Station, Berne, Switzerland 2005.
Architects: Smarch

CCANW has scheduled the morning sessions in the main auditoria bringing together both new and established practitioners from the UK and the rest of Europe, including John Romer from Edward Cullinan Architects, Richard Harris from Buro Happold, Alex de Rijke of dRMM Architects, Beat Mathys of Smarch Architects, Berne and Pekka Heikkinen from the Wood Studio at Helsinki University of Technology.

Further details from:

T: 01409 221896

E: info@woodfairsouthwest.co.uk

www.woodfairsouthwest.co.uk

Exhibition: Possible Forests
Saturday 22-Thursday 27 September
Admission free

Haldon Forest Park is an evolving landscape. What plans would you make for its future?

Throughout the summer of 2007, walking artists *Wrights & Sites* will embark on a series of reconnaissance drifts through the forest with specialists in diverse fields (geography, architecture and planning, psychology, choreography), discussing ways of experiencing, re-imagining and planning the forest landscape.

This exhibition will document these dialogues through maps, texts and video, and give you the opportunity to contribute your own 'possible forest' to the collection.

Practical forum: Wrights & Sites
Sunday 23 September 11am-1pm, 2-3pm
Admission £5 (£4 conc.)

Wrights & Sites and specialist partners provoke playful speculation and dialogue about the future of the trees and, in the afternoon, help you to create a map of your own possible forest.

www.mis-guide.com/possibleforests.html



19
Wrights & Sites

Artists include:
Christopher Cook
Susan Derges
Andy Klunder
Heidi C. Morstang
Liz Nicol
Jem Southam



20
Christopher Cook,
Sand Drawing 2000



21
Jem Southam, *Pinhay Bay*
2003, C-type print from the
Lyme Regis series

Exhibition: Trace & Transience
Saturday 29 September-Sunday 7 October
Admission free

Trace & Transience includes work by six artists, all members of the research group for Land/Water and the Visual Arts based at the University of Plymouth, but with diverse approaches to environmental exploration.

The group consists of artists, writers and curators who collectively embrace a wide diversity of creative and critical practices. Working individually, as well as collaboratively with other organisations, they address issues of sustainability and environmental change, the nature of place, journey and the West Country as a specific geographical region. Associated talks and events will be publicised in our next programme and on our website.

For further information about Land/Water and the Visual Arts contact liz.wells@plymouth.ac.uk

21

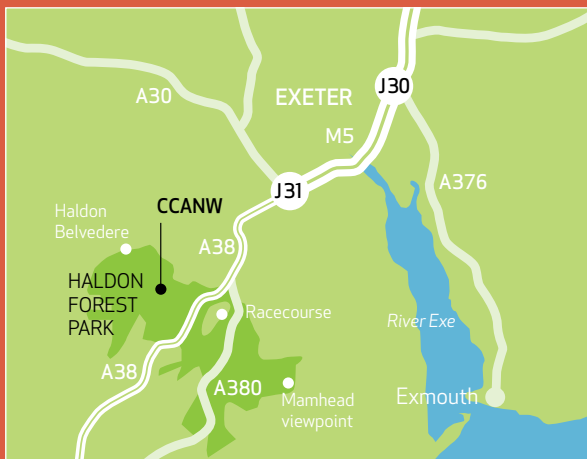


Haldon Forest Park

The Forestry Commission's pioneering activity trails at Haldon provide 20 miles of safe, off-road access for walkers, cyclists and horse riders. The Forest lies on a ridge south of Exeter and dominates the skyline for miles around. It covers an area of 3500 acres (1400 hectares) mostly planted with coniferous woodland, but encompassing areas of broadleaved trees, streams and dramatic views to Dartmoor, Exeter and the Exe estuary.

Forest Cycle Hire

You can now hire your bike and take full advantage of Haldon's several new cycle trails. Open all year, 9am-5pm near to the Rangers' Office. Booking 01392 833768.



Opening times

10am-5pm, Tuesdays to Sundays and all Bank Holidays.

Location

The Project Space is adjacent to the new Gateway car park of Haldon Forest Park, between Exeter Racecourse and Haldon Belvedere, 5 miles (8km) south of Exeter.

Travel

From the A38 (Exeter to Plymouth road) take the turning to Exeter Racecourse and follow the signs to the Forest Park. From the A380 (Exeter to Torquay road) follow the brown signs for Haldon Belvedere.

The 360 bus from Exeter Bus Station to Bridford stops at Haldon Belvedere, a 20 minute walk from the Project Space.

Access

The Project Space and its approach are entirely level. Programme information in large print is available. Signing is available at all events, given one week's notice. Disabled parking and toilet facilities are provided by the Forestry Commission close to the Project Space. The Forestry Commission operates a Pay and Display car park. £1 for up to 4 hours and £2 all day. Season tickets available from the Rangers' Office £10.

Café

Haldon's mobile café is open every weekend and on Bank Holidays, selling delicious ice creams, filled crêpes and organic fruit drinks.

Concessions

Concessions are available to those aged 60+, unemployed, students and under 16.

Mailing list

If you would like to be on our mailing list, please e-mail or phone us with your details.

Volunteers

Volunteers are involved in many activities at CCANW and make a vital contribution to the delivery of the programme. Please contact Johanna if you are interested in volunteering.

Contact

CCANW
Haldon Forest Park
Exeter EX6 7XR
T: 01392 832277
E: info@ccanw.co.uk

www.ccanw.co.uk

Front cover: Lookout Tower, Korkeasaari Zoo, Helsinki. Architect: Ville Hara/HUT.
Image: HUT Department of Architecture Photolab

Programme designed by Northbank, Bath.
Printed on 100% recycled paper from post consumer waste.

