

Centre for Contemporary Art and the Natural World

www.ccanw.co.uk

SUMMER PROGRAMME
JULY-SEPTEMBER 2006

PROJECT SPACE
HALDON FOREST PARK
EXETER



CCANW

01
Susan Derges
Full Moon Larch
2003, Unique
Ilfochrome print



01

Artists in Part 2
Tabatha Andrews
Susan Derges
Jan Dunning
Trevor Felcey
Daro Montag
Michael Porter
Peter Randall-Page

Exhibition: Forest Dreaming, Part 2
Saturday 10 June-Sunday 16 July
Admission free

The experience of entering a forest stimulates our imagination and sharpens all of our senses. The feelings it can evoke can range from ones of fear and mystery to those of enchantment and wonder.

This year-long, evolving exhibition will show work by over 50 artists who have responded in different ways to the forest environment. It is organised in eight parts and has been researched in consultation with curator Angela Kingston and with the help of Stuart Arnold, a student at Bath Spa University.

Part 3: 22 July-28 August
Part 4: 2 September-8 October



PHOTOGRAPH:CHRISLEWIS

02
Young people
attending video
making workshop
in June



Blind Ditch

This project is funded
by Teignbridge Rural
Regeneration Partnership.

**Workshops: Further Framing of the
Forest with Vanland**
**Saturday 8 July, 11am (women) and
1.30pm (older people 55+)**
Admission free. Booking advisable

Following video making sessions with young people in Haldon Forest, CCANW and local artist collective Blind Ditch are extending the Vanland project to women and older people living in rural Teignbridge. The workshops will use creative video making and editing techniques to investigate the forest from both a physical and imaginative perspective. No previous experience is required. Work made during the project will be screened at a later date.

This is an initial meeting to learn more about the project and discuss dates for workshop sessions to be held over July/August.

www.vanland.org

PHOTOGRAPH:BLIND DITCH



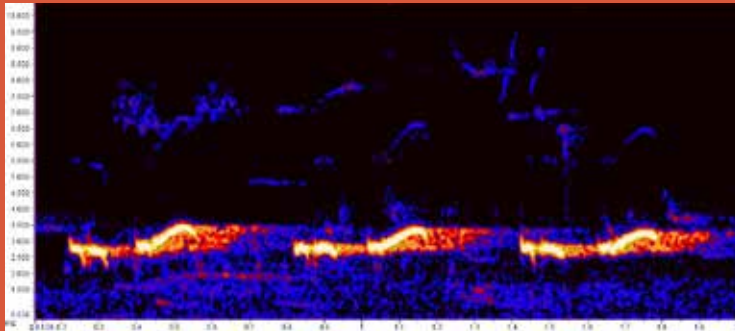
02

Event: Other Voices Acoustic Ecology Forum (incl. workshop and performance)
Sunday 9 July, 10.30am-5pm
Admission free. Booking advisable

A day long exploration of bird song in Haldon Forest. Devon-based sound artist Tony Whitehead will be out from dawn collecting digital audio recordings of birds around the forest. From 11am he will work in the gallery space to prepare and electronically process the sounds for a live improvised performance at 4pm. While working in the gallery, Tony will talk to visitors about the mystery and meaning of bird song.

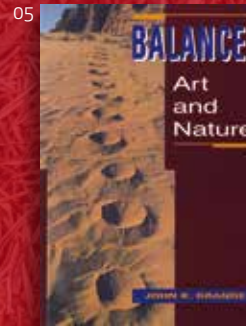
Neil McLachlan, co-founder of the Australian Forum for Acoustic Ecology, is visiting the UK to work on Marcus Vergette's *Time and Tide Bell* project and will be at the Project Space from 10.30am-12noon to discuss his work and research in the field of auditory modeling, machine listening and acoustic design.

03
Song thrush
sonogram
(pitch line)



04
Tango Marica

05
John K Grande
Balance: Art and Nature



Dance Workshop: Tango in the Forest
Sunday 16 July, 1-3pm
Free participation

Join Teignbridge-based group Tango Marica for a dynamic and exciting taster session of smouldering Argentine Tango in the setting of Haldon Forest (1-1.45pm) followed by a social dance session (1.45-3pm) outside the Project Space. No booking necessary, just turn up on the day.

Talk: John K Grande
Sunday 16 July, 3pm
Admission £3 (£2 conc.). Booking advisable

John Grande is a Toronto-based writer and art critic, one of a number of speakers at University College Falmouth's 'Artful Ecologies' conference (12-15 July). His books focus on the relationship between art, nature and the environment and include *Balance: Art and Nature* (1994 and 2004), *Intertwining: Landscape, Technology, Issues, Artists* (1998) and *Art Nature Dialogues: Interviews with Environmental Artists* (2004). He has also co-authored books on Nils-Udo and Alan Sonfist.

Artists in Part 3

Virginia Bodman
Mat Chivers
Chris Drury
Ori Gersht
Alice Maher
Garry Fabian Miller
Jane Mowat
James Ursell

06

James Ursell
She Bear, 2006
Oil on linen

07

Badger
footprint in mud

Exhibition: Forest Dreaming, Part 3 Saturday 22 July-Monday 28 August

Admission free

06



Monthly Workshop: Going Native with Martin Prothero

Sunday 23 July, 10am-4pm

Admission £10 (£8 conc.). Booking essential

Artist and bushcraft expert Martin Prothero offers the chance to explore Haldon Forest from an alternative perspective – to venture off-trail, to see the Forest through more native eyes and to learn to appreciate it for its unique location as well as for its plants, animal and trees. Combining both nature awareness and survival skills, the present and the historical, you are invited to 'go native'.

Please bring your own lunch and sturdy footwear as well as clothing appropriate to the weather. Note that some of the walking may be moderately strenuous – please enquire for more information.

07



08

08

Heike Rindt

09

National Play
Day activity,
organised by
TEPEE

Artist residency: Heike Rindt

Saturday 29 July-Sunday 13 August

Voluntary help and artist participation invited, please enquire

Heike Rindt is a Berlin-based architect and designer. In 2003, along with Alexandra Erhard, she started to collect picnic boxes from around the world, reflecting upon their design, practicality and cultural history. This collection will be on show at Exeter Phoenix, 11 August-12 September.

During her residency at Haldon, Heike will

– with the help of artists and other participants – be seeking out spaces in the forest in which to design and build structures which can then be sought out along trails with the aid of a map. This 'treasure-hunt-like game' will be played for the first time on the day of the Big Picnic at Haldon, Sunday 13 August (see details below).

09



Event: National Play Day

Wednesday 2 August, 12 noon-4pm

Free participation. No booking required

This popular annual event in Teignbridge will be celebrated in Haldon Forest Park this year. There will be a range of drop-in activities for children of all ages and families focusing on playing outside and using resources from the natural environment in support of this year's theme 'Play, Naturally'. Organised by TEPEE (Teignbridge Play Network).



Family 'ArtPlay' Workshops

Thursday mornings, 10.30am-12.30pm

Admission £1 adult, 50p child

No booking required

During the August school holidays, play outdoors with ideas based on the artworks in the Forest Dreaming exhibition using basic art and found natural materials. Children under 8 must be accompanied by an adult.

Our new 'Take away and display' area in the Project Space also has materials for all ages to sketch in the forest – drawings which we will then display in rotation.

Event: The Big Picnic

Sunday 13 August from 11am

Free participation. No booking required

To coincide with the exhibition of picnic boxes at Exeter Phoenix, CCANW and the Forestry Commission are hosting 'The Big Picnic' in Haldon Forest Park. Haldon has a host of shady picnic places, some with spectacular views. You can also bring dough and toppings to bake a pizza in our oven, made in one of Sam Mukumba's workshops, or buy filled crêpes and organic fruit drinks from the mobile café.

There will be live events, performances and workshops. These will include music by the Goliards, an aerial rope performance by Jeremiah Krage, videos recently made in Vanland workshops for young people and artist Jennie Hales' 'Workshop under the Sky' for young children.

August

3: Painting and glitter

10: Nature photograms

17: Sculpture and clay modelling

24: Construction with willow

31: Forest fashion



10
Visitors enjoying Sam Mukumba's bread oven in June

A walk to Haldon from Exeter and a free Exeter/Haldon minibus service are planned, please enquire for details.



Monthly Workshop: Going Native with Martin Prothero

Sunday 27 August, 10am-4pm

Admission £10 (£8 conc.). Booking essential

See previous for information.

Music: Marcus Vergette Conga Band

Bank Holiday Monday 28 August, 1-3pm

Admission free

Enjoy an open-air jazz concert with the Marcus Vergette Conga Band featuring Roz Harding – a group of sympathetic musicians giving a new twist of lime to jazz standards.



11
Marcus Vergette

Exhibition: Forest Dreaming, Part 4

Saturday 2 September-Sunday 8 October

Admission free

The fourth part of this exhibition is entirely given over to local Teignbridge artists and it overlaps with *Teignbridge Nine Days of Art 2006* – an event from 9-17 September, during which over 90 Teignbridge artists open their studios to the public (see www.ninedaysofART.co.uk).

At Haldon, artists working across a wide range of media will largely be creating new work in the forest and the Project Space, starting 29 August. Over the weekend 2-3 September they will be joined by a number of other invited artists and they will together facilitate a 'family weekend of making artworks' – further details available nearer the time.

12
Carre Cooper Locke
(*Teignbridge Nine Days of Art 2006* coordinator),
Teignbridge artists,
CCANW and Forestry
Commission staff



PHOTOGRAPHER: YATES

PHOTOGRAPH: CHRIS LEWIS



13
Memory Band

Film/music event:
Green (Un)Pleasant Land (Age 15+)
Saturday 2 September, 7.30pm
Admission £8 (conc. £6), Booking advisable

In this suitable forest setting, Halloween and animate! join forces to present a spectacular multi-media event mixing film and live music. The Memory Band will accompany a screening of *The Wicker Man* with a live soundtrack - experience the magic and mysticism of this cult classic released in 1972. The Memory Band's Stephen Cracknell will be joined by guest musicians to re-create Paul Giovanni's stunning soundtrack including the classic *Willow's Song*, plus The Memory Band's own incidental music.

Also screening will be a selection of films from the animate! project - way beyond conventional animation - which will include the recent award winning *Rabbit* which uses 1950s children's stickers for a macabre and mystical short story, plus local Devon filmmaker Kayla Parker with two works including *Sunset Strip*, a collage of 365 West Country sunsets.



Films screening:
Miles From Anywhere
(Gary Carpenter)
Rabbit (Run Wrake)
Cage Of Flame (Kayla Parker)
Jumping Joan (Petra Freeman)
Flight (Dryden Goodwin)
Sunset Strip (Kayla Parker)

www.animateonline.org



14
Rabbit (Run Wrake)



15
Wrights & Sites
lead a Blue Boy
Walk in Exeter,
commissioned by
Spacex Gallery

Walk: Forest Drift with Wrights & Sites
Sunday 3 September, 10am-approx 4pm
Admission £6 (£4 conc.) Booking essential

A 'drift' or 'dérive' through the Haldon Forest with members of Wrights & Sites - transferring their practices of urban exploration, surrealistic deambulation and mis-guidance from the city to the trees. Wrights & Sites are a company of Exeter-based artists and authors of the *Exeter Misguide*.

Please bring your own lunch and sturdy footwear as well as clothing appropriate to the weather. Note that some of the walking may be moderately strenuous - please enquire for more information.

Monthly Workshop: Going Native
with Martin Prothero
Sunday 24 September, 10am-4pm
Admission £10 (£8 conc.). Booking essential

See previous for information.



Storytelling event: Tall Tree Tales
Sunday 1 October 2.30-4.30pm
Admission £3 (conc. £2). Booking essential

If trees could talk what stories might they tell? A guided 1½ mile walk in the Haldon Forest with storyteller 'Spindle Wayfarer' - an exciting blend of sensory awareness, traditional storytelling and creative interpretation for all the family.



16

16
Kayagum
played by artist
Seung-hyun Ko

17
Dendros plaque

Artist residencies: Haldon Belvedere

Work made by Seung-hyun Ko, Anke Mellin and Ben Taffinder during last summer's artist residencies in the grounds of Haldon Belvedere can be seen on Sundays and Bank Holidays 1.30-5.30pm until the end of October when the tower is also open to the public.

Installation: Dendros – horizons of change Until the work biodegrades

'Dendros' (from the Greek for 'tree') is an installation along one of the forest trails by conservationist and artist Dave Pritchard which explores timescales of environmental change, as viewed through our relationship with trees.

The project has been organised in association with Research in Art, Nature and Environment at University College Falmouth. Directions available from the Project Space.



17



18



19

18
Sam Mukumba
pouring beeswax

19
Sam Mukumba,
beeswax bowl
and oak sapling

Artist residency: Sam Mukumba

One of Sam Mukumba's workshops in June involved casting a number of bowls from molten beeswax. Participants were asked to find a tree seedling growing in an unsuitable place – typically, a roof gutter or along a road – and replant it in a bowl. Seedlings are still being collected and will be replanted later this year.

New commissions: call for outline proposal

The Forestry Commission are introducing grazing animals to help manage an area identified for both heathland restoration and recreation – a new cycle trail runs through this area. CCANW has been asked to advise over one or more artist commissions which will explore our feelings towards cattle, tell the story of heathland restoration and give key information. A brief will be available very soon; the deadline for outline proposals is 18 August and it is planned that work should be completed by the end of September, or soon after.

Open submission residency: call for submissions

As part of next year's programme 'Tree Culture', CCANW wish to host a residency later this year – for a photographer living in the South West to follow the journey of newly felled timber from Haldon to the sawmill, and then to explore the different uses to which it is put. A brief will be available by the end of August with applications and examples of previous work required by the end of September.

Haldon Forest Park

The Forestry Commission's pioneering new activity trails at Haldon provide 20 miles of safe, off-road access for walkers, cyclists and horse riders, including play and sensory trails. The Forest lies on a ridge south of Exeter and dominates the skyline for miles around. It covers an area of 3500 acres (1400 hectares) mostly planted with coniferous woodland, but encompassing areas of broadleaved trees, streams and dramatic views to Dartmoor, Exeter and the Exe estuary. Part of the forest is designated a Site of Special Scientific Interest.



Opening times

10am-5pm, Tuesdays to Sundays and all Bank Holidays.

Location

The Project Space is adjacent to the new Gateway and main car park of Haldon Forest Park, between Exeter Racecourse and Haldon Belvedere, 5 miles (8km) south of Exeter. OS Grid ref. SX884849.

Travel

From the A38 Devon Expressway (Exeter to Plymouth road) take the turning to Exeter Racecourse and follow the signs to the Forest Park. From the A380 (Exeter to Torquay road) follow the brown tourist signs for Haldon Belvedere.

The 360 bus from Exeter Bus Station to Bridford stops at Haldon Belvedere, a 20 minute walk from the Project Space.

Education/Community Initiatives

CCANW welcomes Johanna Korndorfer as its new Education/Community Coordinator. Johanna has a background in arts, play and Steiner education projects for children and families. She is looking forward to widening access to and participation in our programme. Please contact Johanna for further information on our many interesting volunteering opportunities.

Access

The Project Space and its approach are entirely level. Programme information in large print is available. Signing is available at all events, given one week's notice. Disabled parking and toilet facilities are provided by the Forestry Commission close to the Project Space.

Concessions

Concessions are available to those aged 60+, unemployed, students and under 16. Please supply proof of concession.

Mailing list

If you would like to be on our mailing list, please e-mail or phone us with your details.

Contact

CCANW
Haldon Forest Park
Exeter EX6 7XR
T: 01392 832277
E: info@ccanw.co.uk

www.ccanw.co.uk

Front cover: Alice Maher, *Limb*, 2003. Lambda print, from the exhibition *Forest Dreaming*, courtesy of the artist and Purdy Hicks Gallery.

Programme designed by Northbank, Bath
Printed on 100% recycled paper from post consumer waste

