

Centre for Contemporary Art and the Natural World

Launch of **Fashion Footprints**: Sustainable Approaches

PROGRAMME
AUGUST 2010-FEBRUARY 2011
HALDON FOREST PARK
EXETER

www.ccanw.co.uk



CCANW

Curators

Felicia Felton, Tara Baoth Mooney,
Emma Rigby, Sharn Sandor

Garments

Alabama Chanin, USA
Ardalanish, UK
Ciel, UK
Fashion House, c. 1910, Japan
Finisterre, UK
Issey Miyake, Japan
Izzy Lane, UK
Merel Karhof, NL
ReMade in Leeds, UK

Video book

Nicole Mackinlay Hahn, USA

Finisterre, Stormtrack womens
wear, closely woven ripstop
windshell made of 100% recycled
polyester

PHOTO: ADAM BARNES



Exhibition: Fashion Footprints: Sustainable Approaches

Sunday 1 August-Sunday 21 November

Admission free

Exhibition Preview

Saturday 31 July, 2-4pm

By invitation only

2.30pm – Introduction by Dr. Kate Fletcher,
Reader in Sustainable Fashion at London
College of Fashion

*Ethical fashion represents an approach
to the design, sourcing and manufacture
of clothing which maximises benefits to
people and communities while minimising
impact on the environment.*

www.ethicalfashionforum.com

Curated by four graduates from the
inaugural MA Fashion and the Environment
at London College of Fashion, the exhibition
takes a look at the underlying problems
facing sustainability in the industry through
eight themes identified in Dr. Kate Fletcher's
seminal book *Sustainable Fashion and
Textiles: Design Journeys*.

The exhibition also explores the possible
solutions enabling us, as consumers, to
make more informed decisions about
the clothes we choose to wear.

02



03



04

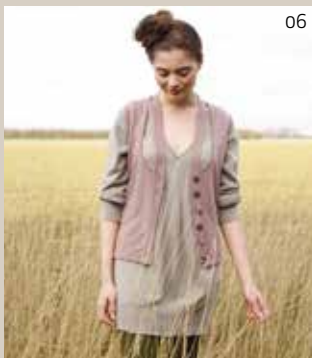
Fashion Footprints



05

Each of the themes – materials, production, garment use, end of life, consumption habits, locality, speed and connection to the maker – will also be illustrated with a garment.

The garments exhibited range from pioneering closed loop production pieces, to items that display a zero waste premise to 'hand me down' and cherished garments that identify with quality and the current speed of fashion consumption.



06

05

Alabama Chanin, Maggie's All-Over Dress, Spring 2010, hand stitched in 100% organic cotton.

IMAGE COURTESY OF ALABAMA CHANIN

06

Izzy Lane, Cashmere cut out waistcoat

PHOTO: IZZY LANE

07

Ciel, Asymmetric draped silver lyocell up-cycled eco-jersey dress

PHOTO: CIEL



07

02

Child labour is used for picking cotton in Uzbekistan

IMAGE COURTESY OF ETHICAL JUSTICE FOUNDATION, COTTON CAMPAIGN

03

Hand embroidered kimono c.1910, Japan (detail)

PHOTO: SHARN SANDOR

04

Collection 10, ReMade in Leeds, community made fashion

PHOTO: SALLY COLE PHOTOGRAPHY

Fashion Footprints: Sustainable Approaches is available for touring to universities and colleges with fashion and textile courses. Please contact CCANW for details.

Our **3 Ways Weaving (and unpicking) Station** will give a chance for visitors of all ages to explore the way textiles are woven and the amazing array of fibres which can produce them.

Event: The Big Wash

Sunday 1 August, 12.30-4pm

Admission free. No booking required

60% of the environmental impact of textiles happens during the 'use' phase of the lifecycle of a garment. Find out how water and energy usage, soaps and other chemicals impact on the environment and rediscover the fine art of washing wool and other delicates with wool expert Yuli Somme.

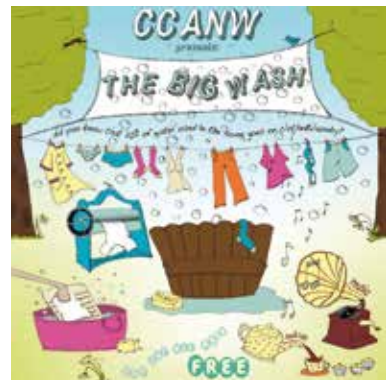


ILLUSTRATION: INES VICENTE

Outdoor Stage: Makers and Musicians

During summer weekends, we will be featuring music performances and makers/designers whose work links to the themes of our programme. Sunday 8 August, Alison Harper and Sunday 29 August, Yuli Somme, both included in *Material Actions*.

Schedule on www.ccanw.co.uk.

Fair Fashion Festival Weekend

Event: Art in the Park goes Slow Fashion Saturday 14 August, 11am-6pm

Admission free. No booking required.

Now in its third year, this event will be fun for all ages and even bigger this year with stalls, workshops, demonstrations and music. Meet local and UK-wide producers and makers working sustainably producing fibres and fashion, and advocacy organisations.

Workshops provided by: Dartington Arts (tbc), Devon Arts Network, Devon Guild of Craftsmen, Embercombe, Exeter Phoenix, Organic Arts, Royal Albert Memorial Museum, Spacex.

Thanks to Albion Canvas for the generous loan of yurts and tepees, and to Yurts for Life for hire support, 14-19 August.

08



09



Designers in the Eco-fashion Show:

Alabama Chanin, Anna-Maria Hesse, Ardalanish, Bodkin, Ciel, Elena Garcia, Emma Rigby, Finisterre, Henrietta Ludgate, John Patrick, Leila Hafzi, Michelle Lowe-Holder, Minna Hepburn, Noir, Rachael Cassar, Tara Baoth Mooney, Thieves and many more.

08

Art in the Park, August 2009

PHOTO: CHRIS LEWIS

09

Portable Pelt 2009 by Tara Baoth Mooney, one of the curators of CCANW's *Fashion Footprints* exhibition

PHOTO: PATRICK HENEGHAN

Event: Eco-fashion Show in the Forest Sunday 15 August, 3-5pm

Admission £12 (£10 conc.). Booking essential. Incl. complimentary glass of wine and slow goodie bag.

Dartington based choreographer Joni Brown will lead dancer/models from Totnes School of Dance in a show featuring innovative garments from the leaders in sustainable fashion. Special guest, Otto von Busch, Fashion Hacktivist; whose projects mix fashion theory and philosophy with fashion craftsmanship and activism. Live music by Duskk.



Workshop: Summertime Blues
Wednesday 18 August and Thursday
19 August, 10am-12noon or 1-4pm

Admission £4 (incl. cloth bag to print on).
Drop-in, no booking required. Suitable for
children and adults

Jane Deane will demonstrate indigo and
woad dyeing and display a selection of
types of plants used for dyeing. Have a
go at printing on a cloth bag using natural
dye pigments.

Jane Deane is the co-author of *Creative
Spinning*.

**September-December: The Fashion
Footprints Road Show**

CCANW takes to the road with a hands-on
workshop aimed for young people in youth
centres, rural and urban group settings
and schools exploring themes around
sustainability in fashion and textiles. For
more information or to book the Road
Show, contact Johanna at CCANW.



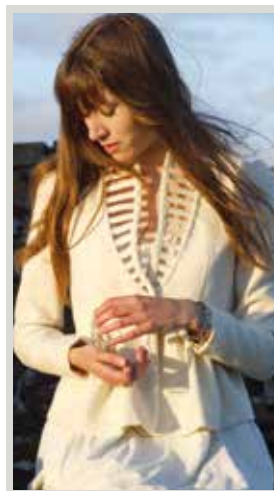
10

10
Lengths of indigo-dyed cotton
hanging in the courtyard Bayt
Muhammad Ali Abud, Zabid,
Yemen, 1983

PHOTO: JENNY BALFOUR-PAUL

11
An average White Face Dartmoor
ewe's wool is worth around £1.50.
Shearing costs about £1 per ewe

PHOTO: DEER PARK FARM



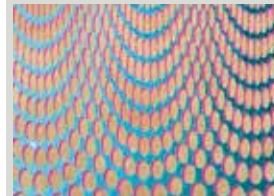
12
Hedgehog Jacket, Ardanish/Anja
Hynnen, made from 100% wool
and organic hemp silk lining

PHOTO: ALEX CONNELL

13
Emma Neuberg, founder of the
Slow Textiles Group, *Cascade*,
recycled pvc, 2007

PHOTO: © EMMA NEUBERG

www.slowtextiles.org



Forum: Wool Culture 2
Town Hall, Bovey Tracey
Friday 24 September, 10am-4pm
Admission £19 (£15 conc.). Booking
essential, includes refreshments and lunch

In association with the Devon Guild of
Craftsmen, the forum intends to stimulate
debate, share information and find new
directions for this undervalued yet
sustainable resource; featuring Ardanish
Isle of Mull Weavers, whose products
include organic meat and award-winning
woollen textiles and fashion, and Val
Grainger, the Woolly Shepherd, Overall
Winner of the Devon Environmental
Business Awards 2009.

www.ardanishfarm.co.uk
www.woollyshepherd.co.uk

Seminar: Material Actions
Studio Theatre, Plymouth College of Art
Saturday 16 October, 10am-3.30pm

Admission free. Booking essential:
exhibitions@plymouthart.ac.uk

To coincide with the Plymouth showing of
Material Actions (9 Sept-23 Oct.), the
College is organising a seminar featuring
presentations by four artists featured
in the exhibition – Lucy Brown, Jonnet
Middleton, Emma Neuberg and Charlotte
Squire.

Workshop: Dinner to Dye for
Friday 22 October, 10am-5pm,
dinner at 6pm

Admission £30 (£25 conc.) including meal.
Booking essential (numbers limited)

Join Katelyn Toth-Fejel, Co-Director of the Permacouture Institute in San Francisco, for an exploration of natural dyeing with a culinary twist as a range of edible natural dye plants culminate into a mouth watering vegetarian meal. An evening of films on the subject of dyeing follows the meal and is free to workshop participants.



Film: Documentaries to Dye for
Friday 22 October, 7.30pm

Admission £5 (£3 conc.). Booking essential

An evening of films, introduced by Jenny Balfour-Paul (tbc), author of *Indigo*, showing how traditional techniques and cultures often use natural dye processes which are environmentally sound and economically beneficial.

14
Tian Kalouli, felt necklace



Half-term Workshop: Felting accessories
Tuesday 26 October, 12.30-3pm

Admission £4. No booking required.

Design and make your own colourful felt accessories using a mix of sustainably farmed merino, local wool and recycled fabrics with feltmaker Tian Kalouli. No experience required.

EXE-treme Imagination Festival of Literature for Children and Young People

Artist Kathy Norris will be making textile books with young children based on their exploration of the forest with the books exhibited at Exeter Phoenix during the festival, November 1-7.

With kind promotional support from Earthscan

Conference: Ethical Fashion Insights
Thursday 4 November, 10.30am-4pm
Somerset College of Arts and Technology

Admission £24 (including lunch); £10 conc. (does not include lunch). Numbers limited; book through CCANW – info@ccanw.co.uk

Featuring presentations from Orsola de Castro, winner of *The Observer* Ethical Award for Fashion, Otto von Busch, Fashion Hactivist and William Lana of *Greenfibres*, this event also includes speakers with insights into areas that impact the industry eg water usage and UK fibre production.

15
Orsola de Castro, *From Somewhere*, Autumn/Winter 2010/11

PHOTO: WILL WHIPPLE
www.fromsomewhere.co.uk
Otto von Busch
www.selfpassage.org
www.greenfibres.com

15



Artists

Barbara Anderson
Sue Bradley
Lucy Brown
Julie Graves
Alison Harper
Faith Kane
Jonnet Middleton
Eleanor Morgan
Emma Neuberger
Mrs Smith
Yuli Somme
Charlotte Squire
Kim Thornton

Note seminar in Plymouth on
16 October

16



16
Eleanor Morgan, *Spider's web
cup and saucer*

PHOTO: ELEANOR MORGAN

17
Jonnet Middleton, *Unity Panda*

18
Barbara Anderson, *Cat and skull
patches*

19
Yuli Somme, *Felt Foot*

Exhibition: Material Actions
Saturday 27 November-Sunday
27 February 2011. Admission free

Exhibition launch:
Sunday 28 November, 2-4pm

All welcome, refreshments provided

Chosen from a UK-wide 'open submission', *Material Actions* shows work by 13 makers which questions how textiles are used to affect and contribute to ethical, social, cultural and environmental change.

Inspired by ideas explored in Textile Forum South West's conference *Textile Footprint* last year, it focuses on the special qualities and active role textiles practice can bring to challenge these debates.



17

Material Actions

A new publication, *Material Actions*, has been published by Plymouth College of Art to coincide with the exhibition with a specially commissioned essay by Dr. Kate Fletcher. Price £4 from CCANW bookshop.

Material Actions has been developed in partnership with Plymouth College of Art and Textile Forum South West.

18



19





Workshop: Upcycling for Xmas
Saturday 4 December, 10am-12noon
or 2-4pm

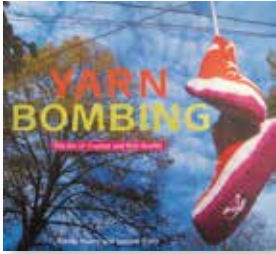
Admission £8 (£6 conc.). Booking essential

Alison Harper will show participants how to make festive decorations from alternative materials eg snack wrappers and other found materials. Produce innovative items suitable for tree, table or even the garden using simple techniques at next to no cost.

Shop

CCANW already stocks the widest range of books, exhibition catalogues and artist monographs relating to the arts and ecology. Our stock is now increased significantly to include many new titles, with a particular emphasis on fashion and textiles. Remember, if you are a Friend of CCANW, you are entitled to a 10% discount on purchases.

During *Fashion Footprints*, CCANW will be selling organic cotton towels generously donated by *Greenfibres* of Totnes, as sponsorship in kind. Also, designer t-shirts from the Environmental Justice Foundation, a charity campaigning to stop forced child labour in cotton production.



20



20
 Oil Spill by Eleanor Partimi.
 Other EJF designs by Ciel,
 John Rocha, Zandra Rhodes, etc.
www.ejfoundation.org

Auction

Fundraiser: Online Art Auctions

During our recent appeal, several artists offered to donate their works to a benefit auction. Rather than hold one auction with many works, CCANW has decided to offer one or more donated works every two months to the highest bidder. Bids for the first two works, kindly donated by Susan Derges and illustrated on our web site, closed at noon 25 July.

Bids for new donated works, including a work by Nicole Mackinlay Hahn, a *Fashion Footprints* exhibitor (see below) are invited from 1 August and at two month intervals with closing bids due at noon, 30 September, 30 November and 31 January. We would welcome donations of work from other artists and collectors to contribute to our evolving online auction.

Nicole Mackinlay Hahn: *Sew Much to Smile About*, archival C-Print, 25,5 x 43cm, from an edition of five

More details on www.ccanw.co.uk



Friends

Friends: Make a difference

We would like to thank everyone who contributed so generously and promptly to our successful appeal in January by becoming a CCANW Friend or making a donation.

If you like what we're doing and would like to help us build on our successes as an innovative educational charity, why not become a CCANW Friend?

You can join for a mere £1 a month and your contribution would directly support our busy year-round programme of exciting events, workshops and activities. Single memberships are £12 per annum, concessions (those aged 60+, unemployed, students and under 16s) £10 and joint memberships £18. If you'd like to join, please send us a cheque (made out to CCANW), together with the completed form.

As a small thank you we are offering Friends 10% off ticketed events, sales of art works and books purchased in the bookshop.

If you would just/also like to make a donation, please Gift Aid it if you pay tax at the basic rate or above each year, as this increases your donation by 28% at no extra cost to you.

You can also now become a Friend or donor on our website www.ccanw.co.uk



Friends Membership/Donation Form

Name:

Home address:

Postcode:

Telephone:

Email:

I would like to become a CCANW Friend (tick as appropriate):

Single £12 £10 (conc.)

Joint (enter second name below) £18

I would just/also like to make a one-off donation, which is eligible for Gift Aid Amount

giftaid it

Gift Aid declaration

I am a UK tax payer and would like CCANW to claim Gift Aid over my donation

Signed

Registered Charity Number: 1092019

Mailing List Form



Name:

Job title and company (if applicable)

Mailing address:

Postcode:

Telephone:

Email:

I am interested in volunteering for CCANW

Signed



Mailing list

Mailing List: Do you want to join?

If you would like to join our mailing list and receive our bi-annual programmes by post and/or occasional e-bulletins (which may include additional events), send us your details (name, address, email address) to info@ccanw.co.uk, with the words 'I'd like to join your mailing list' in the subject line. Alternatively, send us your details by post to: CCANW, Haldon Forest Park, Exeter EX6 7XR, using the form provided.

Do you still want to receive information from us?

CCANW is in the middle of updating its mailing list and wants to check if you are still happy to receive information about forthcoming activities, events and exhibitions. It is also an opportunity to check if the contact details we have for you are correct.

Please let us know at info@ccanw.co.uk if you would like to be taken off our postal and e-mailing lists altogether, if you would only like to receive e-bulletins or only brochures or both (if you don't already) or if your details have changed.

Volunteers

Volunteers are involved in many activities at CCANW and make a vital contribution to the delivery of the programme. For more information please contact Johanna on j.korndorfer@ccanw.co.uk



The Ridge Café

The Ridge Café – next to CCANW – has been designed around sourcing local produce, from fresh farm breakfasts, homemade soups and pies, sandwiches, gourmet burgers and ice creams. Please consult their website for opening times www.theridgecafe.co.uk.

t: 01392 833268

Forestry Commission events

The Forestry Commission also runs a wide variety of events at Haldon. Details are listed in their South West events programme available from the Rangers' office. See also: www.forestry.gov.uk/haldonforestpark

t: 01392 834233

Forest Cycle Hire

You can hire bikes and take full advantage of all of Haldon's cycle trails. Booking and information www.forestcyclehire.co.uk.

t: 01392 833768

Adventure Course: Go Ape

Go Ape is an award-winning high wire forest adventure course at Haldon. Details and booking online www.goape.co.uk

t: 0845 6439215



21
David Nash at Yorkshire Sculpture
Park Underground Gallery

PHOTO: JONTY WILDE

Don't Miss

David Nash at Yorkshire Sculpture Park 29 May-27 February 2011

David Nash is an internationally acclaimed British artist known primarily for his work in wood. This exhibition is his largest ever and presents sculpture, drawings and photographs from across a forty-year career.

There are over 200 works on display in all four indoor galleries and in the open air. There is also a new permanent, outdoor commission – *Black Steps* (2010) – on the walking route to Longside Gallery.

Catalogues available from CCANW

www.jsp.co.uk

21



CCANW hopes to be able to show a selection from this exhibition next year.

Haldon Forest Park

The Forestry Commission's pioneering activity trails at Haldon provide 20 miles of safe, off-road access for walkers, cyclists and horse riders, including play and sensory trails. The Forest lies on a ridge south of Exeter and dominates the skyline for miles around. It covers an area of 3500 acres (1400 hectares) mostly planted with coniferous woodland, but encompassing areas of broadleaved trees, streams and dramatic views to Dartmoor, Exeter and the Exe estuary.

Travel

From the A38 Devon Expressway (Exeter to Plymouth road) take the turning to Haldon Forest Park and follow the signs. From the A380 (Exeter to Torquay road) follow the brown tourist signs for Haldon Belvedere.

The Dartline 360 bus from Exeter Bus Station to Bridford stops at Haldon Belvedere, a 20 minute walk from the Project Space (not on Sundays and Bank Holidays).



CCANW opening times

10am-5pm, Tuesdays to Sundays and all Bank Holidays, except between 1 November to 28 February when closing at 4pm. Closed for Christmas, 24-31 December (re-open New Year's Day).

CCANW concessions

Concessions are available to those aged 60+, unemployed, students and under 16.

Location

The Project Space is adjacent to the new Gateway car park of Haldon Forest Park, between Exeter Racecourse and Haldon Belvedere, 5 miles (8km) south of Exeter.

Access

CCANW and its approach are entirely level. Programme information in large print is available. Signing is available at all events, given one week's notice. Disabled parking and toilet facilities are provided by the Forestry Commission.

Parking

The Forestry Commission operates a Pay and Display car park. £2 all day, Bank Holiday weekends £3, yearly car parking Discovery Pass £20, minibuses £7, coaches £12. Concessions available. Rangers office 01392 834251.

www.forestry.gov.uk/haldonforestpark.

Contact

CCANW, Haldon Forest Park
Exeter EX6 7XR T: 01392 832277
E: info@ccanw.co.uk www.ccanw.co.uk

Funders



Fashion Footprints sponsors

Albion Canvas (yurt maker)
Drytac Europe (display banner fabric)
Earthscan (environmental and sustainable development publisher)
Greenfibres (pioneers of eco goods and garments)
Heath Lambert (art insurance)
MikeWye.co.uk (suppliers of natural building and decorating products)
MJS Engineering & Land Surveying PC
N3 Display Graphics (display banner printing)
Think IT (small business networks)

Thanks also to Boyces at Manstree (vineyard) and Burwood Lighting

Front cover:

Cape by Michelle Lowe Holder, dress by Minna Hepburn from *Eco-fashion Show*. PHOTO: J.P. CARVALHO

Programme designed by Northbank, Bath.

Printed using vegetable based inks on 100% recycled paper from post consumer waste.

