

The Centre for Contemporary Art and the Natural World is an innovative organisation which uses the Arts to explore new understandings of our place within Nature. It does so at a time marked by a convergence of concern over a number of urgent environmental and social issues.

The creation of this Project Space marks the first phase of the establishment of the Centre and of an exciting new, long-term partnership with the Forestry Commission in Haldon Forest Park.

Our integrated artistic and educational programme aspires to cover all art forms including performance, new media, architecture and design. It will take place here, in the forest and other locations and includes exhibitions, artist residencies, projects, workshops, live events and talks.

Tree culture is CCANW's year-long festival for 2007-8 which will focus on the use of timber in contemporary architecture. At its heart is an exhibition in the summer of 2007 which will showcase the ten most exciting examples of timber buildings around Europe.

THE BUILDING

Wall and ceiling paint is solvent-free and low titanium dioxide content

Wall and roof insulation is made of cellulose fibre from recycled newsprint

Walls of aerated concrete block add thermal mass

Recycled storage heaters recessed to increase heat transfer to the block walls

Timber products such as furniture and ply on partition faces are FSC certified

The original sloping floor was raised using block from the demolished internal partitions. Insulation and concrete was added to provide thermal mass

Reclaimed pitch pine joinery, floor and entrance doors

Woodwork finishes are herbal oil primer and hard oil

CCANW, Haldon Forest Park
Kennford, Exeter EX6 7XR
T 01392 832277 www.ccanw.co.uk

CCANW is pleased to acknowledge support for its 2005-7 programme from Arts Council England, Defra and the Dartmoor National Park Authority, Devon County Council, Forestry Commission, National Lottery (Awards for All), Leader+ (Defra and EAGGF), Teignbridge Rural Regeneration Partnership and Teignbridge District Council.



Project Space: Haldon Forest Park

BRIEF

- To create a high quality environment
- To accommodate a flexible gallery/studio/office space
- To provide a secure and stable environment for creating and exhibiting art

CHALLENGES

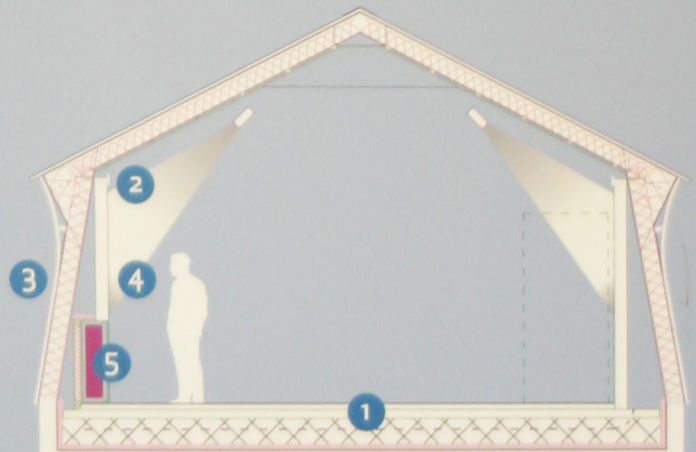
- The structure was a redundant shed
- A very restricted budget

PHILOSOPHY

- Maximum use of environmentally sound building methods
- A low impact approach to the exterior
- Welcome the visitor with a sense of calm for contemplation

PRACTICALITIES

- 1 The concrete floor was at three different levels and sloping; this was raised using demolition materials and finished with recycled pitch pine boards
- 2 A high level aluminium fascia masks a continuous wiring tray providing maximum flexibility for future installations
- 3 The existing wall cladding was a single layer of plywood: FSC certified weather board is used for external cladding and internally the timber frame is insulated with cellulose fibre
- 4 A new internal blockwork box gives a vertical exhibition wall and adds thermal mass
The void behind the box provides service routes
- 5 Recycled storage heaters are recessed to increase heat transfer to the block walls



Gallery area: 82.4m²
Store/workshop and loading deck: 24m²
Total area: 138m²
Construction cost: £518/m²

Architects: Harris McMillan architecture + design
Main contractor: Hannon Young Ltd
Services: IJ Cannings and Son Ltd
Insulation: PC Builders
Security: Venture Security Systems Ltd
Desk and bookcases: Carpenters Ltd
Audio visual consultant: John Collingswood
Joinery supplier: Winkleigh Timber Ltd

Gallery seating: Robert Kilvington
Metal fabrications: BJ Engineering
Metal fabrications: Projex Engineering Ltd
Decoration suppliers: Mike Wye & Associates
Decoration: CCANW staff & volunteers
Ironmongery: Wessex Ironmongery Ltd
Graphic design: Northbank Design Ltd
Lighting: Burwood Lighting Company Ltd

